

BUSINESS INFORMATION

GENERAL INFORMATION

Indiana Mills & Manufacturing, Inc.

DBA: IMMI
Office Telephone: 317-896-9531
Office Fax: 317-896-2142
Email Contact: info@imminet.com
Web Site: imminet.com
CAGE Code: 29944
Duns Number: 00-606-3101

BUSINESS INFORMATION

Year Incorporated: 1961
State of Incorporation: Indiana
Employees: 1,050
Years in business: 52

CERTIFICATIONS

ISO 9001:2008
ISO/TS 16949:2009
ISO 14001

LOCATIONS

Headquarters

18881 U.S. 31 North
Westfield, IN 46074 USA

North Carolina

816 West Fairland Road
High Point, NC 27263 USA

Kansas

302 E. Dean
Burrton, KS USA

UK

Unit 46 Colbourne Avenue
Nelson Park
Cramlington, Northumberland NE23 1WD UK

Mexico

Blvd. Cesar H. Cantu No. 176
Parque Industrial Alianza, Derramadero
Saltillo, Coahuila Mexico

China

Furong Scientific and Industrial Park
No. 18 Furong Road One, Xishan Economic and
Technology Development Zone
Wuxi, Jiangsu China

CAPABILITIES STATEMENT

EXECUTIVE SUMMARY

For more than 50 years, IMMI® has been the industry leader in the design, testing and manufacturing of advanced safety systems. The company was founded in 1961 and operates from its headquarters on a 70-acre campus in Westfield, Indiana.

Today, IMMI has grown into a global company with facilities in North America, Asia and Europe that specializes in bringing customized safety solutions to the off road, commercial, and heavy truck markets.

An ongoing dedication to "Bringing Safety to People" is the hallmark of the company, and this commitment continues today as IMMI pioneers the latest generation of advanced safety systems.

IMMI produces hundreds of innovative products for various sectors. IMMI products are found on commercial, industrial, military and emergency response vehicles, as well as on school buses, motor coaches and child restraints.



UNIQUE STRENGTHS OF IMMI

- Engineered safety systems
- Full-service design, development, technical support, and manufacturing
- In-house testing and certification

IMMI PRODUCT OFFERINGS

- Seat Belt Systems
- Bunk Restraints
- Tethers
- Integrated Belts
- Rollover Protection
- Frontal Airbags
- Side Airbags
- Resettable Tensioning
- Active Safety Systems
- Webbing Based Solutions
- Fire Extinguisher Restraints
- SCBA Holder
- Cargo Nets and Slings
- Storage Rack Netting
- Sewing and Fabrication

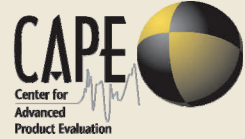
TOP CAPABILITIES

- Innovative design team
- U.S. based vertical manufacturing
- Internal tool build, prototype development, and low-rate production support
- In-house regulatory testing / self certification
- ISO 9001:2008, ISO/TS 16949:2009, ISO 14001



TESTING CAPABILITIES

IMMI products are tested beyond regulatory requirements, enabling the company to deliver dependable, high-quality safety systems to its vehicle customers. At the company's Center for Advanced Product Evaluation (CAPE®) crash test laboratory, research and development engineers prove the performance of products through the use of crash testing, rollover testing, impact testing, load testing and environmental testing. CAPE houses a unique rollover test machine designed for large commercial vehicles, as well as the largest impact barrier of its kind. When added to the latest dynamic test sled, a reverse-firing servo sled from Seattle Safety, and a new drop tower with test capability up to 300g, you have an innovative facility capable of testing crashworthiness unique to large commercial and military vehicles.



Barrier crash test

Barrier Crash Test

Large Capacity:
38,000 lbf at 50 mph
GVW up to 80,000 lbf
4m Tall Barrier Face

Crash Types:
Full Frontal
Offset Under-Ride
Oblique
Vehicle to Vehicle
Custom Tests

Speed Range: 2 – 65mph



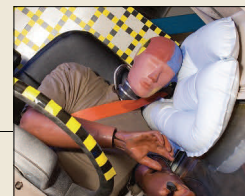
90° Rollover impact test

Dynamic Testing

FMVSS 201U, 202, 202a,
203, 204, 206, 208, 212,
213, 214, 218, 219, 301

SAE J2249, J2418,
J2419, J2420,
J2422, J2425

ECE R16, R44, R94
ISO 10542
APTA –SS-C&S 016-99
Custom Tests



Frontal & side roll protection

Quasi-Static Testing

FMVSS 207, 210, 220,
222, 225

FMCSR 393.76
ECE R14, R29

SAE J386, J1948,
J2292,
Custom Tests

Vibration / Shock Mil-Spec 810H

Drop Tower Custom Tests

Rollover SAE J2426

Applied Mechanics

Crash Analysis
Multi-Body Analysis

Structural Analysis
FMVSS 206 Analysis

CAPE
Center for Advanced
Product Evaluation

18881 U.S. 31 North
Westfield, IN

317-867-8225
capetesting.com

QUALITY

Incoming Inspection

ISO 9001:2008, ISO/TS 16949: 2009 Certified, ISO 14001

Product qualification lab and test engineering support staff

